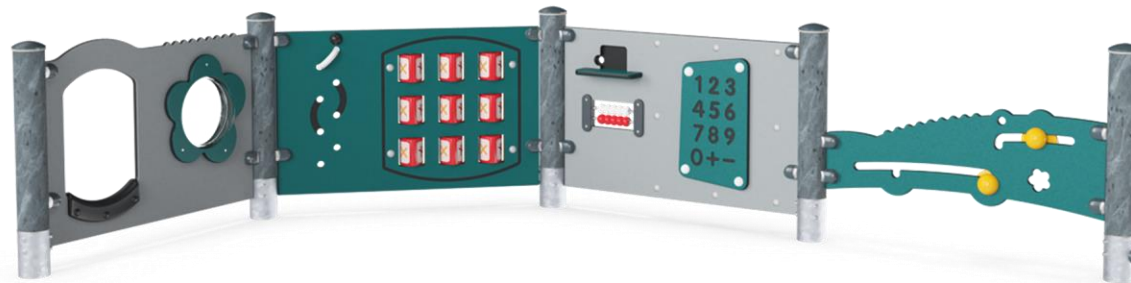


# Play Panel 4 - School, Classic

PCM003421



Item no. PCM003421-0901

## General Product Information

Dimensions LxWxH	306x200x75 cm
Age group	1+
Play capacity (users)	14
Colour options	



The School Play Panel 4 is a richly stimulating play invitation for young children. The multiple, varied play events will make them return to the panels again and again. The panel with play scoops can be used from both sides and materials can be transported and shifted, which is great training of logical thinking skills for young children. The blackboard panel with abacus and peephole is great for training fine

motor skills and invites playing school. Dramatic play is a great stimulation of language and communication skills. The Tic-Tac-Toe panel appeals to older children who train strategic thinking when playing games with rules. The Climb through and See through panel presents two very popular activities: crawling through and peeping through. The cross-coordination trained when crawling and

climbing is a fundament for children's understanding of space, shapes and measures and ultimately mathematics. The bubble window distorts back children's voices when they speak into it. That will keep them coming back repeatedly, for more fun games with friends.



Data is subject to change without prior notice.

# Play Panel 4 - School, Classic

PCM003421



## Bubble Window

**Social-emotional:** invites interaction between outside and inside.

**Cognitive:** distorts the sound of the voice, developing logical thinking.



## Crawl-through hole

**Physical:** the hole allows for climbing and crawling through, developing cross coordination, proprioception and spatial awareness.

**Social-emotional:** cooperation and turn-taking when passing one another.

**Cognitive:** understanding space, shape and measures when seeing if the body can fit through the hole.



## Ring game

**Social-emotional:** cooperating from both sides on running rings up and down trains turn-taking and cooperation skills.

**Cognitive:** figuring out how to turn the ring to make it fit the holes and move up or down trains logical skills.

**Creative:** leaving rings in new positions leaves a mark in the playground.



## Flaps

**Social-emotional:** peep-holes and two sided activities support cooperation, turn-taking and social play skills.

**Cognitive:** understanding object permanence, that items still exist even though they disappear out of sight is what children train when they shift things through holes. The soft rubber adds tactile variation and cause and effect understanding.



## Sand scoops panel

**Physical:** hand eye coordination and push-pull movements.

**Social-emotional:** invites cooperation due to the two-sidedness and provides for parallel play.

**Cognitive:** logical thinking: cause and effect understanding when running scoops in grooves or shifting materials from scoop to scoop.

**Creative:** shifting scoops, creating new scoop positions.



## Tic-tac-toe panel

**Social-emotional:** stimulates communication and turn-taking skills.

**Cognitive:** support rules understanding, strategic thinking.

**Creative:** leaving marks when tumblers are left in new positions.



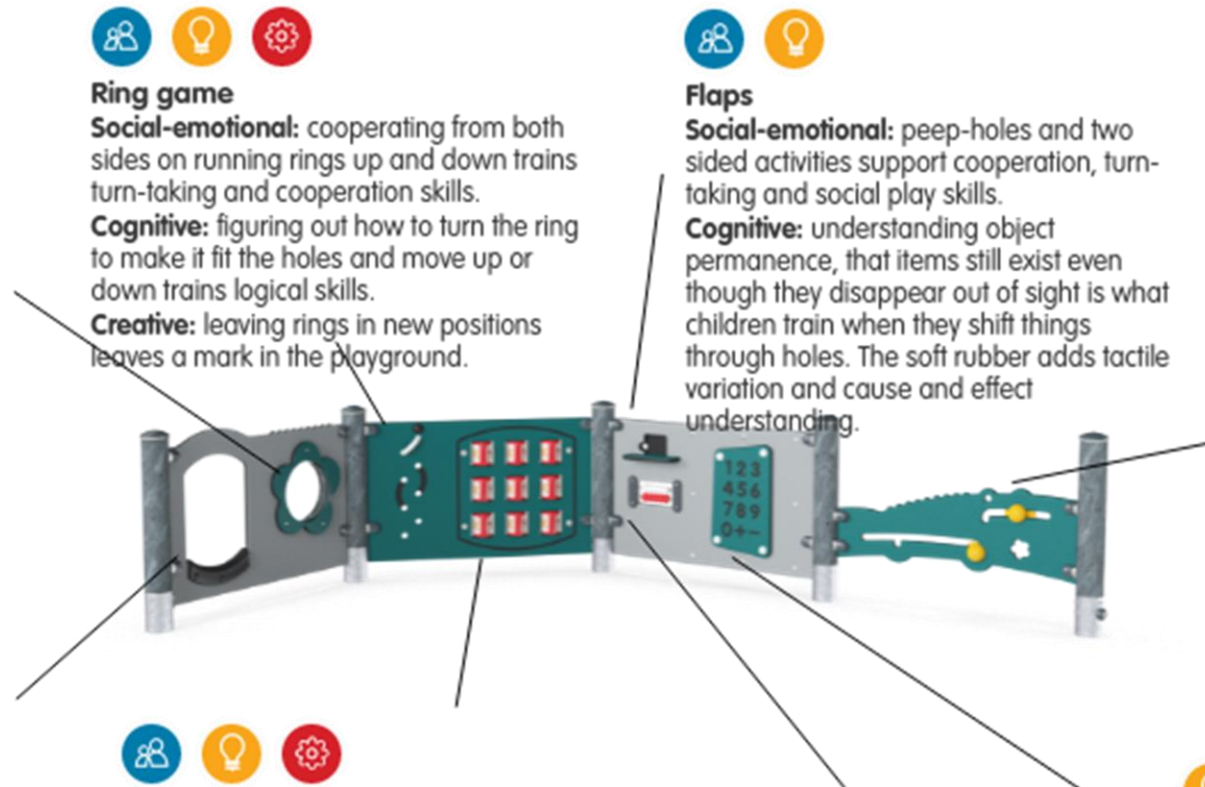
## Abacus

**Cognitive:** supports understanding of measures.



## Number panel

**Cognitive:** stimulates understanding of numeracy and mathematics.



# Play Panel 4 - School, Classic

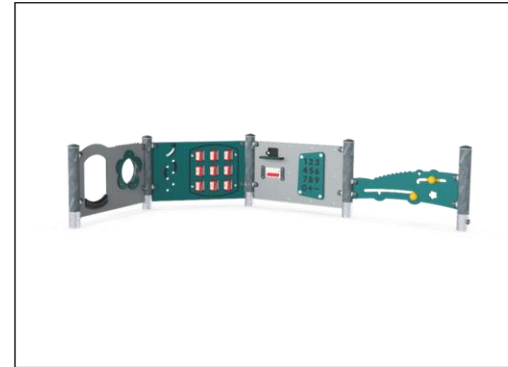
PCM003421



Panels of 19mm EcoCore™. EcoCore™ is a highly durable, eco friendly material, which is not only recyclable after use, but also consists of a core produced from 100% recycled post consumer material from food packing waste.



Main posts with hot dip galvanized steel footing are available in different materials: Pressure impregnated pine wood posts. Pre-galvanized inside and outside with powder coated top finish steel posts. Lead free aluminum with color anodized top finish. Greenline TexMade posts of 100% post-consumer recycled PE and textile waste.



KOMPAN GreenLine versions are designed with ultimate environmentally friendly materials with lowest possible CO2e emission factor such as EcoCore™ panels of 100% post consumer recycled ocean waste.

Item no. PCM003421-0901

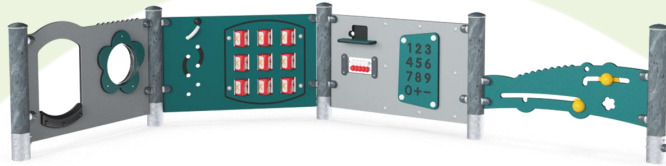
## Installation Information

Max. fall height	0 cm
Safety surfacing area	20,9 m <sup>2</sup>
Number of installers	2
Total installation time	7,5
Excavation volume	0,05 m <sup>3</sup>
Concrete volume	0,00 m <sup>3</sup>
Footing depth (standard)	85 cm
Shipment weight	117 kg
Anchoring options	

## Warranty Information

EcoCore HDPE	Lifetime
Post	10 years
Hot dip galvanised steel	Lifetime
Movable parts	2 years
Spare parts guaranteed	10 years

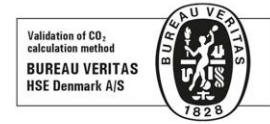




Cradle to Gate A1-A3	Total CO <sub>2</sub> emission	CO <sub>2</sub> e/kg	Recycled materials
	kg CO <sub>2</sub> e	kg CO <sub>2</sub> e/kg	%
PCM003421-0901	262,02	2,79	57,69
PCM003421-0950	216,05	2,07	71,46

The overall framework applied for these factors is the Environmental Product Declaration (EPD), which quantifies "environmental information on the life cycle of a product and enable comparisons between products fulfilling the same function" (ISO, 2006). This follows the structure and applies a Life-Cycle Assessment approach to the entire Product stage from raw material through manufacturing (A1-A3))

**Kompan A/S**  
 C.F. Tietgens Boulevard 32C  
 DK-5220 Odense SØ  
 Denmark



### Validation of CO<sub>2</sub> calculation of: Play systems



Data version no. 2021-01-11

The CO<sub>2</sub> calculation and data are in compliance with the principles of a carbon footprint impact according to the GHG protocol (Greenhouse Gas Protocol), Scope 3, cradle to gate related to all individual components in the product category: "Play systems" represented by item no.: PCM200309-0010. (Scope 3 emissions include emission sources in the upstream and downstream value chain).

**Date: 15. October 2021 | Valid until: 15. October 2023**

**Validated by:**

Bente Hviid, Senior Consultant

Peter Bendtsen, Senior Consultant

Validation based on report: Validation of CO<sub>2</sub> calculation of play systems – Kompan, version 1.0, prepared by: Bureau Veritas HSE, Denmark: Bente Hviid and Peter Bendtsen.

**Publication date: 15. October 2021**

By Bureau Veritas HSE  
 www.bureauveritas.dk  
 +45 7731 1000

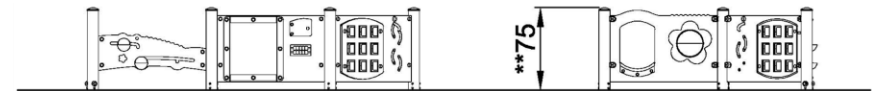
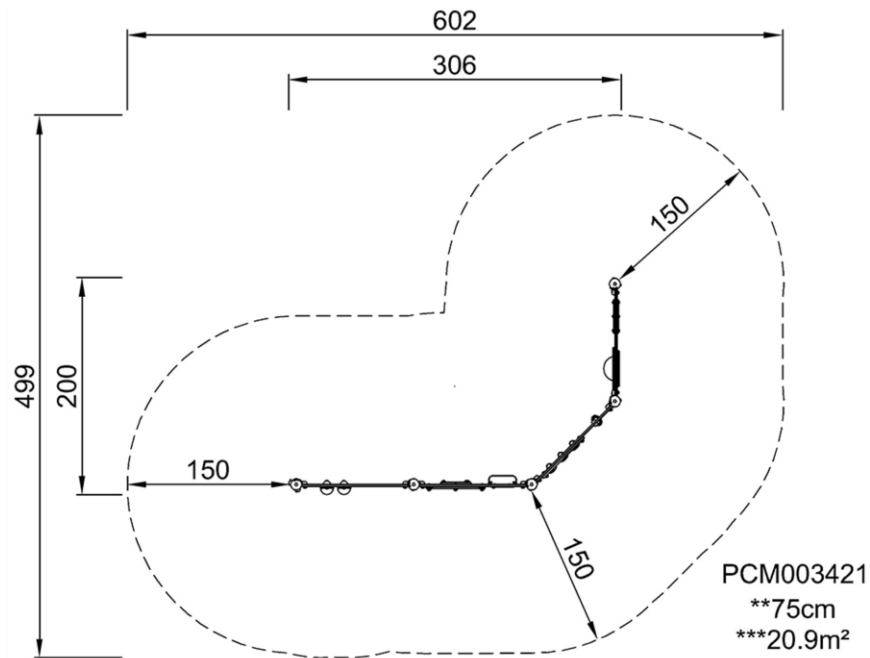


# Play Panel 4 - School, Classic

PCM003421

\* Max fall height | \*\* Total height | \*\*\* Safety surfacing area

\* Max fall height | \*\* Total height



PCM003421  
1:100

[Click to see 1:100 ratio TOP VIEW](#)

[Click to see 1:100 ratio SIDE VIEW](#)